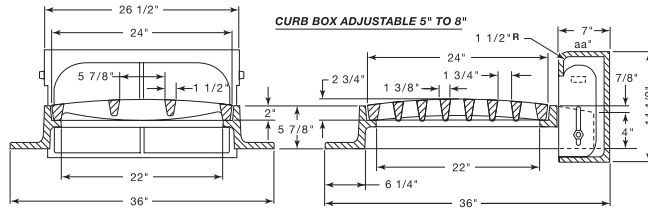


■ Note: When specifying/ordering grates, refer to "Choosing the Proper Inlet Grate" on pages 125-126.
 For a complete listing of FREE OPEN AREAS and WEIR PERIMETERS of all NEENAH grates, refer to pages 327-332.

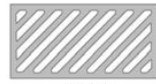
R-3229-A
Combination Inlet Frame, Convex Grate, Curb Box

Heavy Duty



Standard Grate (shown): Type C
 Alternate Grate(s):

CATALOG NUMBER	GRATE TYPE	SQ. FT. OPEN	WEIR PERIMETER LINEAL FEET
R-3229-A	C	1.5	8.0
R-3229-A	R	1.6	8.0
R-3229-A	D	1.6	8.0

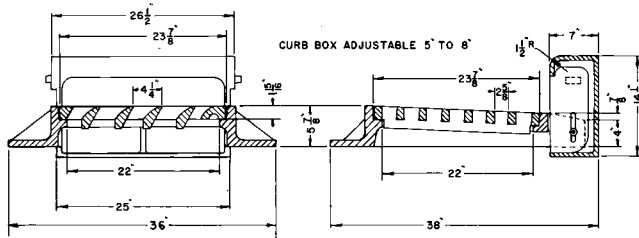


Type R

Type D

R-3229-L
Combination Inlet Frame, Grate, Curb Box

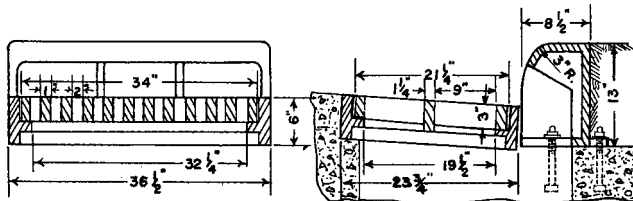
Heavy Duty



CATALOG NUMBER	GRATE TYPE	SQ. FT. OPEN	WEIR PERIMETER LINEAL FEET
R-3229-L	L	1.5	6.0

R-3233
Large Combination Inlet Frame, Grate, Curb Box

Heavy Duty



CATALOG NUMBER	GRATE TYPE	SQ. FT. OPEN	WEIR PERIMETER LINEAL FEET
R-3233	A	2.8	6.4

To order without curb box, see R-3469.

Supplied By:



877-903-7246

www.trenchdrainsupply.com

COMBINATION
 INLETS
 3

